

Four walks to St Benet's Abbey from Ludham and Ludham Bridge.

Walking times reflect a leisurely rather than brisk pace. All four are quite short, but can be joined up to make longer circular walks.



1 St Catherine's Church in Ludham

Ludham Bridge spans the river Ant and lies on the A1062 between Horning and Ludham. There is a Courtyard of shops, eateries and a gallery, and also day-boat hire, public toilets, public telephone, car parking and a bus stop here.

Ludham Village has a good sized village shop and post office, tea-rooms, the Kings Arms pub, a butcher's, and a gift shop on the staithe which has toilets.

Route 1, from Ludham Bridge. Walking time 30 minutes.

Start by the shops and walk along the pavement towards Ludham, past the pub called The Dog. As you approach the stretch of road signed as Johnson Street, look on your right for the blue pedestrian sign to Ludham village.

Cross the A1062 and follow this lane (Hall Road) to the next junction. A sign-post marked 'Restricted Byway to St Benet's Abbey' tells you to turn right down St Benet's Abbey Road which turns into a concrete farm track. Proceed along this track for 1 mile to arrive at the Abbey site.



2 The 18th century mill, built on top of the Abbey gatehouse.



THE NORFOLK
ARCHAEOLOGICAL
TRUST





Route 2, From Ludham Bridge.

Walking Time 25 minutes.

Start at the shops and walk along the pavement towards Ludham. Just past the Public Toilets you will see a signposted path on the other side of the road, which leads to St Benet's Abbey. Cross the A1062 here and follow this grassy path to the Abbey.

Routes 1 and 2 can be joined up to make a circular walk.

Route 3, From Ludham Village. **Walking Time: 40 minutes.**

From the King's Arms pub on the bend in the A1062, cross the road and walk past Ludham Butcher's with the church on your right. Continue along Staithe Road for half a mile, passing Lovers' Lane on your right, until you reach a junction with Hall Common Road with its small grass island.

Turn right onto Hall Common Road and walk for about a third of a mile until you reach the St Benet's Abbey Road junction with a Restricted Byway signpost to St Benet's Abbey. Continue along here as per Route 1

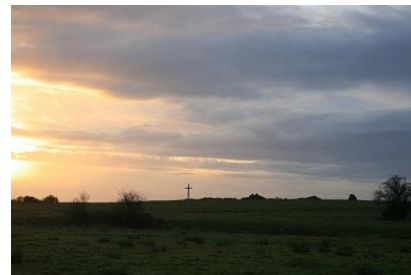
Route 4, from Ludham Village.

Walking Time 45 minutes.

From the King's Arms, walk west on the Norwich Road towards Horning, passing St Catherine's Church and the Church Rooms on your left. Walk up to the minor crossroads of Lover's Lane, Pound Lane and Norwich Road.

Turn left along Lover's Lane, then take the Public Bridleway towards Ludham Hall. After passing the Hall on your right you reach Hall Road. Turn left here and walk about 300 meters to the junction with St Benet's Abbey Road and a Restricted Byway signpost to the Abbey. Proceed along this road as per Route 1.

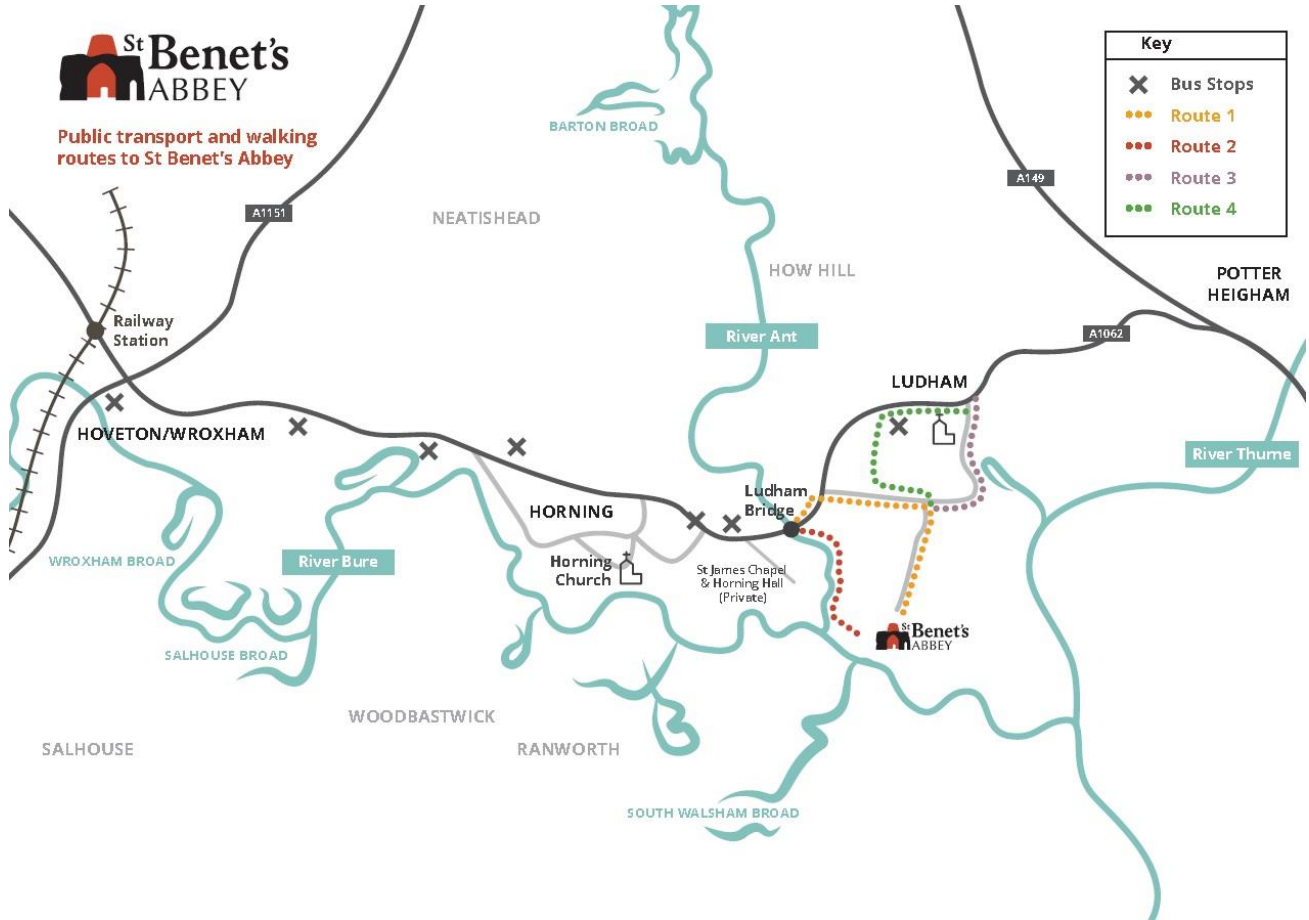
Routes 3 and 4 can be joined up to make a circular walk



THE NORFOLK
ARCHAEOLOGICAL
TRUST



St Benet's ABBEY



THE NORFOLK
ARCHAEOLOGICAL
TRUST



Broads Authority
The Broads is a member of the
National Park Family



Norfolk County Council



Norfolk & Norwich
Archaeological Society



Supported by
The National Lottery®
through the Heritage Lottery Fund



heritage
lottery fund